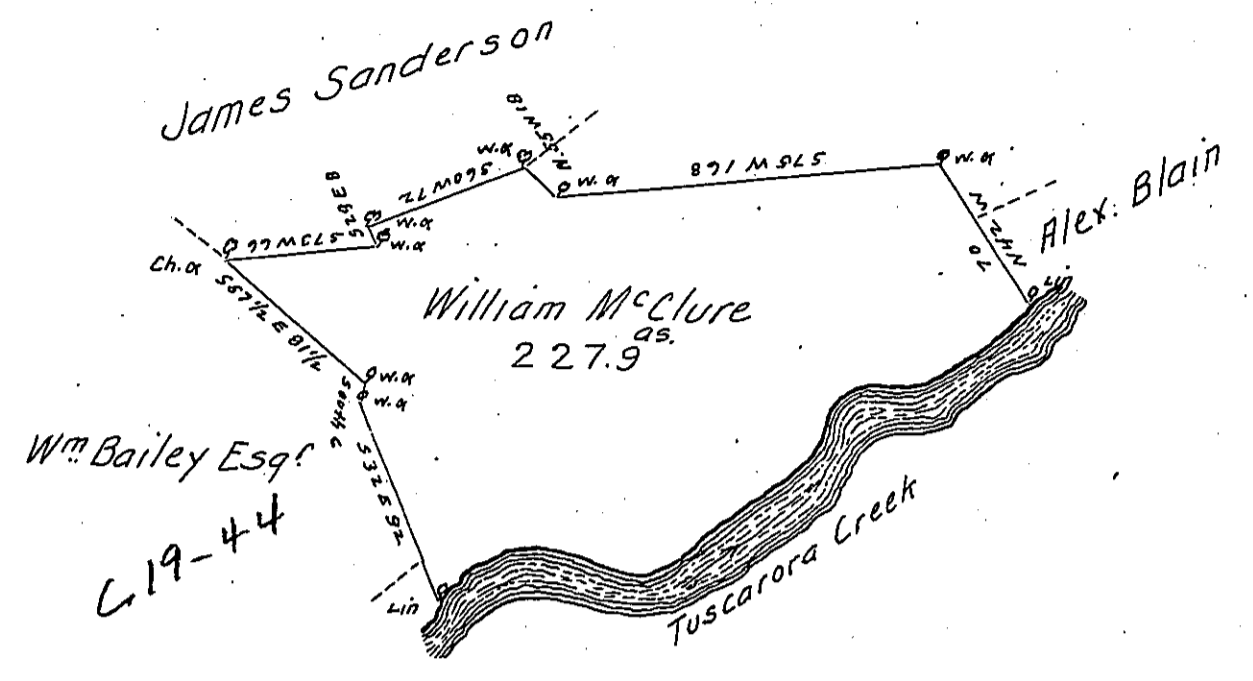


Courses Down
Tuscarora -

- N. 38 E 40
- S. 82 E 54
- N. 52 E 43
- N. 39 E 25
- N. 52 E 22
- N. 18 E 42 1/2
- East 18
- N. 56 E 48
- N. 30 E 24



A Draught of a tract of land situate in Lack township Cumberland County Containing two hundred twenty seven acres nine tenths & the usual allowance for roads &c. surveyed for William McClure April the 4th 1787 in pursuance of a Warrant Dated the 22^d day of Feby. 1787.

John Lukens Esq. }
Surv. Gen. } pr. Saml. Lyon D. S.

IN TESTIMONY that the above is a copy of the original remaining on file in the Department of Internal Affairs of Pennsylvania, made conformably to an Act of Assembly approved the 16th day of February, 1833, I have hereunto set my Hand and caused the Seal of said Department to be affixed at Harrisburg, this sixth day of February 1906.

Loac N. Brown
Secretary of Internal Affairs.